



W A S A T C H

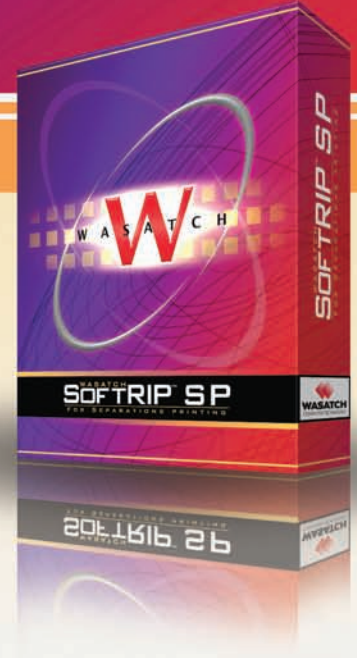
# WASATCH SOFT RIP<sup>®</sup> SP

FOR SEPARATIONS PRINTING

## REVOLUTIONIZING COLOR SEPARATIONS

Offset, Flexography & Screen Printing

Inkjet printers have revolutionized the production of color separations for screen, flexo, and litho printing. Wasatch software has led the way with the features you need to be successful with this type of printing. Don't settle for second best. SoftRIP SP is the industry leading solution for color separations via inkjet printer.



### Save money with inexpensive inkjet hardware

Today's inkjet printers can produce high quality film output without the cost of traditional imagesetters. Films produced with Wasatch achieve the quality associated with imagesetters at a fraction of the cost.

### Take Control of your workflow

Removing service bureaus from your workflow reduces lead-times while increasing your flexibility to respond to customer needs and react to last minute changes. Screen printers around the world are using SoftRIP SP with inkjet printers to better serve their customers and beat the competition.

### Break even on your investment fast

You can purchase quality inkjet printing hardware and SoftRIP SP for the same money you likely pay to your external film service provider in just a few months. Quality results, better service, fast return on investment! What are you waiting for?

### Intuitive Precision

Creating films with traditional imagesetting technology required specific expertise. SoftRIP SP is so easy to learn and easy to use that even beginners with minimal background in film production will produce quality results fast. Advanced users will find all the controls they need to easily apply their expertise with traditional technologies to a digital workflow.

### Perfect Moiré-Free Rosettes

Only SoftRIP SP has Wasatch Precision Rosette Screens<sup>®</sup> to produce perfect center-filled rosettes across the full width of your small or large format digital printer. With lpi and dpi values precisely selected for the production of color separations, these pre-calculated sets of postscript screens produce excellent quality output right out of the box.

### More Tools More Control

Wasatch is a pioneer in the field of inkjet separations printing. With tools like Hybrid Screens for eliminating yellow moiré, overprint support, and dozens of operator controls, SoftRIP SP is the answer to reaching your color separation printing goals.

the  
**INDUSTRY LEADING SOLUTION**  
for **INKJET FILM**  
**PRODUCTION**

333 South 300 East  
Salt Lake City, UT 84111, USA



**WASATCH**  
COMPUTER TECHNOLOGY

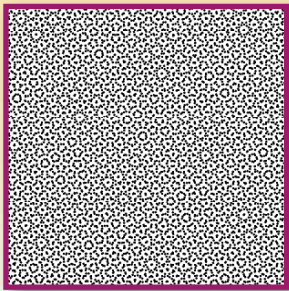
+1.801.575.8043  
800.894.1544

[www.wasatch.com/sp.html](http://www.wasatch.com/sp.html)

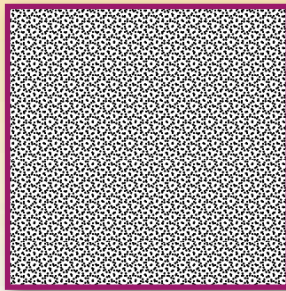
**THE NEXT GENERATION IN SEPARATIONS PRINTING**

Wasatch SoftRIP® SP has everything you need to make high-quality, low-cost separations right out of the box. Beginners will find an easy workflow that they can learn and use quickly. Printing experts will produce unparalleled quality film output with tools for moiré-free rosettes, hybrid rosettes, and more. Whatever your separations printing goals, you will succeed with SoftRIP SP.

**WASATCH PRECISION ROSETTE SCREENS**

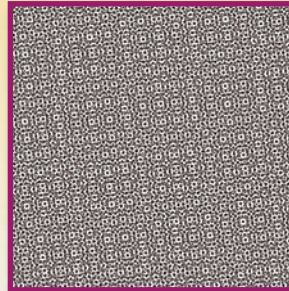


Failed CMK Rosette with Moiré

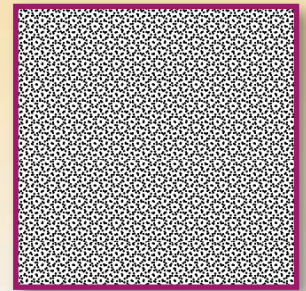


Center Filled Rosettes without Moiré

**PRECISION ROSETTE / STOCHASTIC HYBRID SCREENS**



CMYK Rosette showing Yellow Moiré



Hybrid Rosette Screens Eliminates Yellow Moiré

**Exclusive Color Separation Tools**

- Wasatch Precision Rosette Screens® for high-end process color
- Precision Rosette/Stochastic Hybrid Screens eliminate 15° yellow moiré while maintaining a traditional rosette appearance
- Supports for pre-separated and separate-on-RIP color separation workflows, including support for Overprint
- Complete operator control of dot shape, screen angle and frequency for the creation of custom PostScript™ screens
- Controls for stochastic screens dot size adjustment
- Negative linearization capability for printing film negatives and custom black channel linearizations
- Easy swapping of C, M, and K screen angles
- Calibration utility is compatible with all major color measurement instruments
- Halftoning capabilities for achieving high UV density and superior dot accuracy

**Based on the Industry's leading RIP for Color**

- The Digital Tool Kit™ puts key file preparation tasks on the main screen so you're ready to RIP fast
- Quick printer setup that requires no previous RIP experience to complete
- Master Queues Manager™ for tracking the status of your production in real-time
- Easy workflow options for processing files individually or as part of a complete layout
- Wasatch ImageNET® to print directly from networked Mac, PC or Unix workstations
- Smart Nesting™ to create media and time saving layouts automatically
- 16-bit rendering reproduces color with the greatest level of intricacy for high-definition output
- Thousands of plug and play Imaging Configurations for superior out-of-the box color