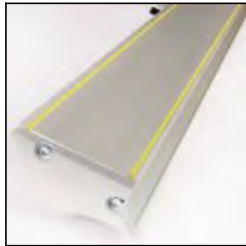




Accurate safe cutting anywhere

Remove the safety risk of using a hand knife by adding the lightweight Simplex to your tool kit. Ideal in the workshop or on-site, for use by the craftsman or fitter, the Simplex offers precision cutting accuracy in any environment. It will tackle a wide variety of materials from PVC foamboard to floor coverings and its superior build quality and robust design makes it the perfect portable unit.



Materials cut

Semi-rigid materials

- PVC foamboard ≤ 6mm (1/4")
- Corrugated/fluted plastic ≤ 10mm (3/8")
- Corrugated cardboard ≤ 10mm (3/8")
- Foam centred board ≤ 10mm (3/8")

Rigid materials (scoring only)

Cast acrylic / Plexiglas ≤ 3mm (3/32"), using SCO scoring blades

Flexible materials

- Banners
- Magnetic sheet
- Film
- Self-adhesive vinyl
- Textiles and delicate materials, with optional fabric cutter attachment



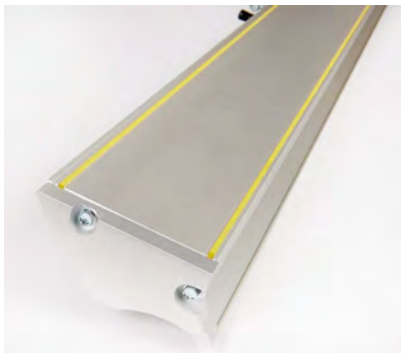


Built to be portable

The Simplex is lightweight and robust and can withstand the rigours of on-site working whilst being truly portable. By manufacturing in-house, with only the highest quality materials, Keencut can guarantee that the Simplex will provide reliable long-lasting and accurate service. The Simplex also has a comprehensive five year guarantee.

The versatile cutter

The Simplex is very adaptable providing the safe, accurate cutting of a wide variety of rigid, semi-rigid and flexible materials up to 3.1 metres (124") wide. The utility blades will cut to a depth of 10mm (3/8"). By adding the optional textile cutter, the material range of the Simplex is extended to delicate materials. There are 5 Simplex model sizes to choose from and a cutting mat is required for safe operation. Please note, the cutting mat is not supplied.

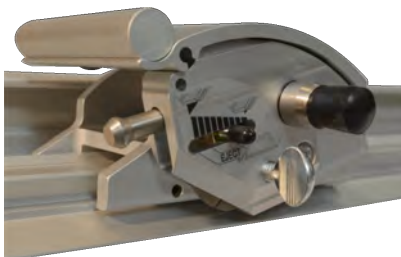


Perfect accuracy

The Simplex is guaranteed to cut within 1.0mm (0.004") of a straight line for the whole length of the cutter. The soft silicone cord on the underside of the cutter grips and protects materials whilst preventing any movement during use. The Simplex is calibrated for immediate 'out of the box' accuracy and is designed to remain accurate with only minimum maintenance.

Safety by design

The Simplex overcomes the safety hazards of using other methods of portable cutting. It removes the need for using a hand knife and straight edge where users risk the blade slipping away from the straightedge or overshooting at the end of the cut. With the Simplex the blade instantly retracts when not in use.



Easy to use

Everything has been considered to ensure ease-of-use and reduce user fatigue. An ergonomic rocker style cutting head is designed for left or right-handed use, and the blade can be pulled or pushed, as appropriate for the material being cut.



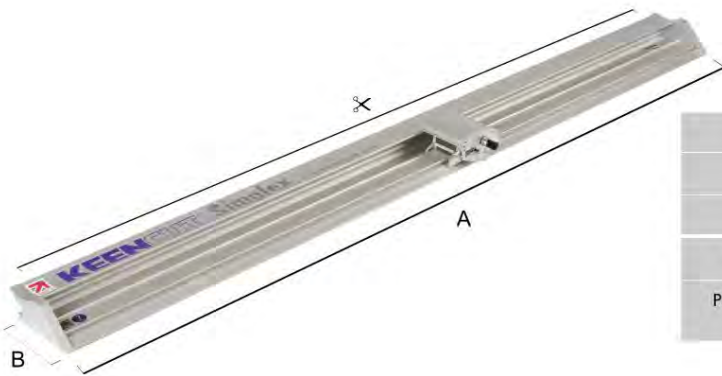
Five year guarantee

By manufacturing in-house, with only the highest quality materials, Keencut can guarantee that the Simplex will provide reliable long-lasting and accurate service. All Keencut products are offered with a comprehensive five year guarantee. [Register your product to activate your guarantee >](#)



In the box

100 medium duty utility blades



	SIM110	SIM160	SIM210	SIM260	SIM310
✂ Cut Length cm (")	110 (44)	160 (64)	210 (84)	260 (104)	310 (124)
A cm (")	127 (50)	177 (70.75)	227 (89.5)	277 (109.25)	327 (128.75)
B cm (")	11 (4.4)	11 (4.4)	11 (4.4)	11 (4.4)	11 (4.4)
Packed Weight KG (lbs)	4 (9)	6 (13)	7 (15)	21 (46)	26 (57)
Packed Dimensions cm (")	139x17x16 (55x7x6)	190x17x16 (75x7x6)	237x17x16 (93x7x6)	289x20x17 (114x8x7)	338x20x17 (133x8x7)

