

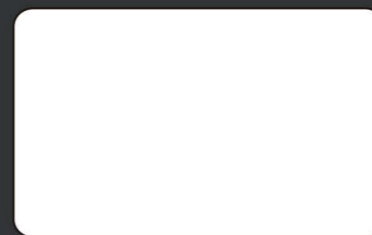
Specification		S400
Work Area		40 x 24 in. (1016 x 610 mm)
Max. Part Size (W x L x H)	All doors closed	41.4 x 25.4 x 11 in. (1053 x 647 x 280 mm)
	All door open	41.4 x ∞ x 11 in. (1053 x ∞ x 280 mm)
Table Size		Standard Grid Cutting Table 40.1 x 24.1 in. (1019 x 613 mm)
Dimensions (W x L x H)		56.7 x 34.5 x 41.3 in. (1440 x 900 x 1048 mm)
Weight	CO ₂ 30W~40W	260 kg / 573 lb
	CO ₂ 60~100W	270 kg/ 595 lb
	Fiber 20W~60W	260 kg / 573 lb
Laser Source		10.6-μm CO ₂ laser: 30 to 100W 9.3-μm CO ₂ laser: 60W, Fiber Laser:20 to 60W
Cooling		Air-cooled, Operating environment temperature 15°- 30°C (59°- 86°F)
Drive		Closed-loop DC servo control
Maximum Motor Speed		140 IPS
Speed Control		Adjustable from 0.1~100% (Up to 16 color-linked speed settings per job)
Power Control		Adjustable from 0~100% (Up to 16 color-linked power settings per job)
Engraving Capability		256-level gray scale image processing capability
Distance Accuracy		0.254 mm or 0.1% of move, whichever is greater
Z-Axis Movement		Automatic
Focus Lens		CO ₂ : Standard 2.0" (Optional 1.5", 2.5" & 4.0") Fiber: Standard 2.0" (Optional 4.0") Dual (CO ₂ +Fiber): Standard 2.0" (Optional 3.0" & 4.0")
Resolution (DPI)		Available 125, 250, 300, 380, 500, 600, 760, 1000, 1500
Computer Interface		10 Base-T Ethernet USB-A for USB storage USB-B 2.0 for connection
Compatible Operating System		MS Windows 64 Bit
Control Panel		Touch Screen
Safety		Class I Laser Product Complies with EN60825-1:2014, EN ISO 13849-1:2015 Class II Laser Product Complies with CDRH for CO ₂ Laser Class 3R Laser Product Compliant with CDRH for Fiber & Dual Laser sources 2006/42/EC Machinery Directive Compliance Class 4 Laser Product Compliant with CDRH with the optional pass-through door module
Operating Voltage		Below 80Watt, 100-240VAC, 50/60HZ Auto Switching, max. 15A 80Watt and above, 200-240VAC, 50/60HZ Auto Switching, max. 15A
Fume Extraction System		External exhaust system with minimum flow rate 800m ³ /h (CFM 471 ft ³ /h) is required, 2.3kPA negative pressure (Pure-Air PA-1500FS @ 4" exhaust port)

** Speed is not equal to throughput. See dealer or visit www.gccworld.com for more detail.

▲ Specifications are subject to change without prior notice.



Authorized Dealer



www.GCCworld.com

The Flagship Model of The Laser Engraver

Your Best Ever, Beyond Expectation,
Unlimited Laser Machine.



Laser Engraver
S400

- 40" x 24" (1016 mm x 610 mm) extra large working area
- CO₂ and Fiber Hybrid laser option in one laser machine
- High speed 140ips DC servo motor for precise and rapid movement of the laser carriage
- GCC dust protection technology and SmartLID™ make maintenance a lot easier
- QSM (Quality Speed Mode) maintains 100% engraving quality while operating at maximum speed
- Patented SmartACT™ motion control technology increases your productivity by reducing ramping process and job running time
- Drag and engrave feature assures remarkably easy and fast set-ups
- LED light modules illuminate the working area
- Pass-through front and rear doors to accommodate long working pieces (Optional)

GCC LaserPro S400



Laser Engraver GCC LaserPro S400

Inherit all the advantages from Spirit Hybrid, a brand new machine – S400 features 140ips processing speed by DC servo motor, innovative touch panel, user friendly interface and a modern good looking design. Together with SmartLID™ easy access, dust protection, S400 presents you the highest throughput and precise laser quality. GCC S400 makes all your imaginations to life at the speed of light.

Features



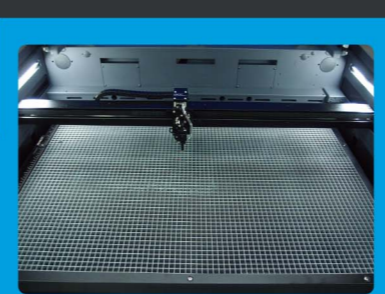
SmartLID™ Easy Access

Easy access design simplifies the maintenance job.



SmartACT™ (Patented)

Ground-breaking technology that reduces the ramping process and the job running time, which translates into higher productivity.



SmartLIGHT

Built-in LED light module illuminates the working space and makes every engraving detail easy to see.



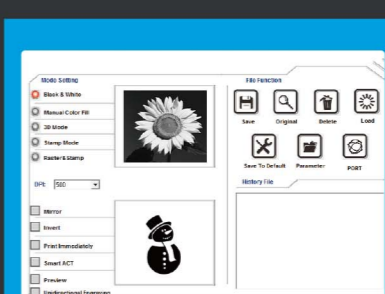
Pass-through Front & Rear Doors (Optional)

Convenient front and rear door open design enables loading of extremely long working pieces with ease and extends business flexibility.



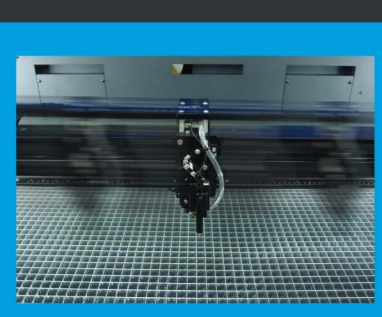
New Airflow Design

All new airflow design provides the best vacuum effect.



User Friendly Driver Interface

Starting from end users' view, GCC driver evolves into a brand new design with the intuitive interface to favor each user.



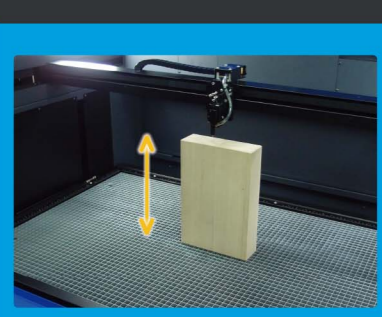
Perfect Cutting and Engraving Throughput

Maximum 140ips processing speed with powerful DC servo motor to boost productivity while maintaining precision.



Dust Protection

Reduce the dust into the machine and gantry during processing with protection design.



Higher Working Depth

Depth of Z-axis up to 11" (280 mm).



Intuitive Touch Screen

Operation is easy and intuitive with the 4" touchscreen.

GCC LaserPro S400 Application

